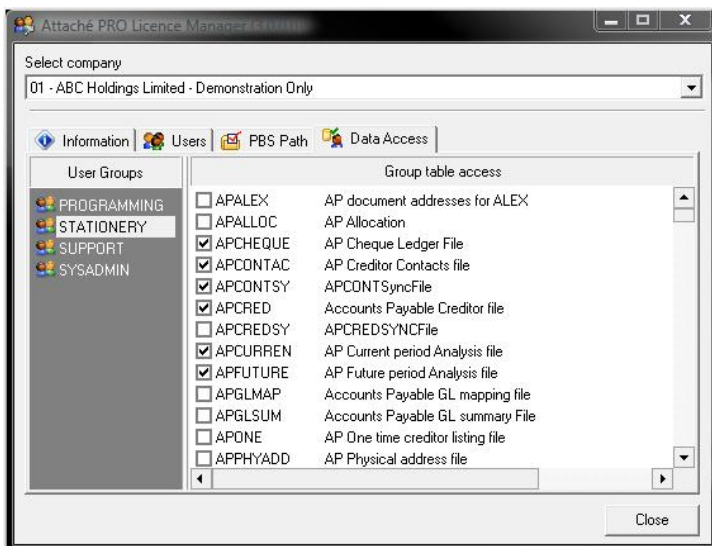


# OLE-DB Driver

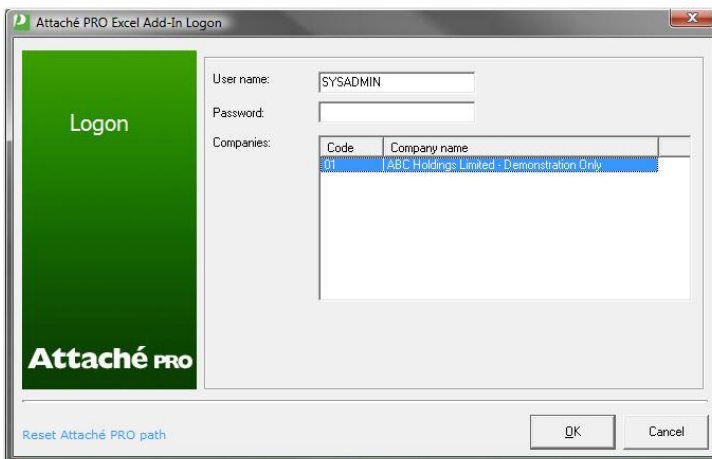
## Industry Standard Access to your Attaché PRO data

OLEDB stands for 'Object Linking and Embedding – Database', it is a modern international standard for accessing stored data. It is a newer technology that adds additional functionality over and above ODBC. Our OLE DB driver opens up a whole new window of opportunity for accessing your Attaché PRO accounting data in other Windows applications.

Using the included Excel Add-In for MS Excel 2003, data generated from your accounting software, you can create a new report or visually analyse your data. This will allow you to quickly and easily create ad-hoc views of your data without the need to re-key information. The main advantage of our OLE DB driver is that it interfaces directly with the Attaché PRO security system, allowing administrative control over access to your accounting data,



This screen shows Attaché PRO licence manager. Access to data can be set for groups of users.



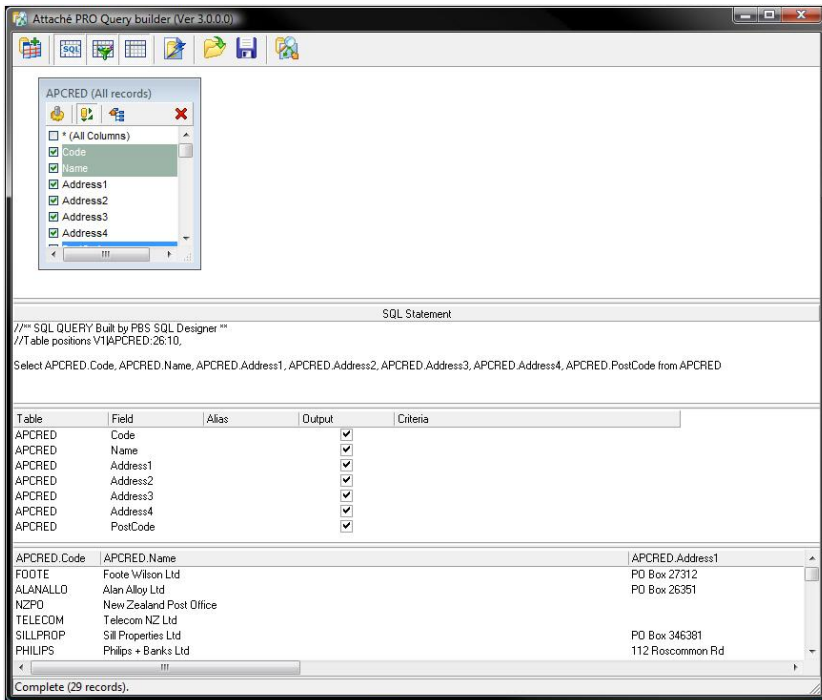
This screen shows how the Excel Add In controls access using the standard Attaché PRO security system, preventing unwanted access to your accounting data.

## Key benefits

With OLE DB your Attaché PRO accounting data can be accessed by other OLE DB compliant applications, opening up a whole new world of data analysis and custom user reporting.

- Export to MS Word, Excel and many other Windows applications
- Data stored using FlexiData can accessed via OLE DB
- View your data in OLE DB compliant applications
- Visual SQL builder allows you to easily create optimized Attaché PRO SQL statements
- Speed, our OLE DB driver is considerably faster than our ODBC driver.
- Create your own reports

## Export of data



Attaché PRO SQL Query builder screen

You can export data from any of your Attaché PRO modules. For example, you can open your Attaché PRO General Ledger or Sales Analysis data in MS Excel and do year-to-year comparisons, or graph your data for a sales meeting. You can export names and addresses of your customers into MS Excel and use MS Word to mail merge. This is an ideal way to keep your customers informed of your latest product specials or manage your debtors.

## Attaché PRO Query Builder

Using our Excel Add-in you can isolate the information you require from each module. You can then filter this information and view it prior to exporting.

## Reporting Flexibility

With Attaché PRO OLE DB, you can transfer data from Attaché PRO, perform queries on your data and access it in a manner that best suits your needs and experience. As different companies have different requirements, you don't need to wait until your ideal report is created. You can design your own using the tools with which you are already familiar.

### OLE DB Compatibility

Not all software supports the use of OLEDB. Always check your software before buying OLE DB. We recommend OLE DB for users of MS Office 2003 and above.

General Ledger  
Cashbook  
Accounts Receivable  
Accounts Payable  
Inventory Control  
Special Pricing  
Fixed Assets  
Bill of Materials  
Sales Order Entry  
Sales Analysis  
Purchase Ordering  
Purchase Analysis  
Foreign Currency  
Payroll  
Alex  
Report Designer  
Data Transfer  
FlexiData  
ODBC  
OLE DB  
Archiver  
Scheduling

# Attaché

**Attaché Software New Zealand Pty. Limited**  
Level 4, 48 Greys Ave, Auckland 1010  
PO Box 37-623, Parnell, Auckland 1151  
Tel + 64 9 302 9390  
Fax + 64 9 302 9391

**Attaché Software Australia Pty. Limited**  
18 Berry Street, North Sydney NSW 2060  
PO Box 1070, North Sydney NSW 2059  
Tel + 61 2 9929 8700  
Fax + 61 2 9925 0481

Email [sales@attache.co.nz](mailto:sales@attache.co.nz)  
Website [www.attachepro.com](http://www.attachepro.com)